



DISPENSERS



PUMPS



METERS



NOZZLE



FILTRATION

FLUID  
MONITORING

# FUEL & BIOFUEL

## FEATURES

- BURSTING PRESSURE 10 BAR
- REPLACEABLE CARTRIDGE
- HIGH EFFICIENCY
- SMALL SIZE

Among its range of filters, PIUSI has developed the FUEL&BIOFUEL FILTER: cartridge and water absorbing filters that prevent fluid contamination thanks to their improved filtration capacity up to 30µ.

## PERFORMANCE

UP TO

**100 L/MIN**

FLOW-RATE

**3,5 BAR**MAX OPERATING  
PRESSURE

FILTRING CAPACITY

**200β/10µ**

BIOFUEL

FILTRING CAPACITY

**2β/5-10µ**

FUEL



BIO-FUEL FILTER



OIL AND FUEL FILTER



LINE FILTER 1-1



## PACKAGING

CODE	WEIGHT	DIMENSIONS MM	PACKAGING	
	KG		CARTRIDGE PSC / BOX	FILTER HEAD PCS/BOX

### FILTER FOR BIOFUEL

FO0611COO	2	390X285X140	2	1
FO0611C10	1,9	390X285X140	1	1
F14861000	-	-	1	-
R14862000	-	-	1	-
F14640000	-	-	-	50
F15743000	-	-	-	1

### FILTER FOR FUEL AND OIL

FO77200A	1	200X120X140	1	1
FO914900A	2,6	390X285X140	1	1
FO9149020	2,6	390X285X140	1	1
FO0611000	-	-	1	-
FO9359000	-	-	1	-
FO9359010	-	-	1	-
F14528000	-	-	-	1
F15743000	-	-	-	1
F16483010	9,2	500X300X200	15	-

### LINE FILTER

FO8950000	-	-	-	-
-----------	---	---	---	---



HOSE REELS



ACCESSORIES



MERCHANDISE



AIR



ANTIFREEZE



AdBlue®



BIODIESEL



DIESEL



FOOD



GASOLINE



GREASE



KEROSENE



OIL



WATER



WINDSCREEN

**DIMENSIONS**

A B C D F  
(mm) (mm) (mm) (mm)

**FILTER FOR BIOFUEL**

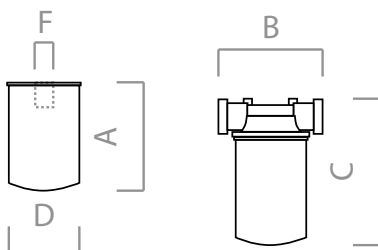
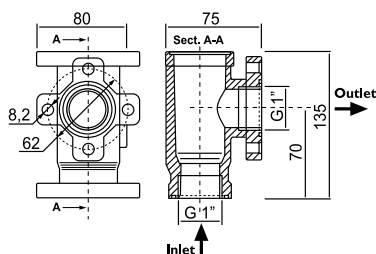
FO0611C00	-	100	275	95	-
FO0611C10	-	171	340	130	-
F14861000	220	-	-	95	1" - 12 UNF
R14862000	275	-	-	130	1" 1/2 - 16 UNF
F14640000	-	100	-	-	1" - 12 UNF
F15743000	-	171	-	-	1" 1/2 - 16 UNF 1" 1/4 BSP

**FILTER FOR FUEL AND OIL**

FO777200A	-	100	160	98	-
FO914900A	-	171	236	132	-
FO9149020	-	171	236	132	-
FO0611000	145	-	-	98	3/4" BSP
FO9359000	180	-	-	132	1" 1/4 BSP
FO9359010	180	-	-	132	1" 1/4 BSP
F14528000	-	100	-	-	3/4" BSP
F15743000	-	171	-	-	1" 1/2 - 16 UNF 1" 1/4 BSP
F16483010	139	-	-	93	3/4" BSP

**LINE FILTER**

FO8950000	-	-	-	-	-
-----------	---	---	---	---	---

**BIO-FUEL / OIL AND FUEL FILTERS****LINE FILTER 1-1**

Dimensions expressed in millimeters

**IN THE BOX**

- FILTER CARTRIDGE
- METALLIC HEAD
- ADDITIONAL CARTRIDGE
- INSTRUCTION MANUAL

**DETAILS****MATERIALS**

- FILTER CARTRIDGE
- METALLIC HEAD
- ADDITIONAL CARTRIDGE
- INSTRUCTION MANUAL

**TECHNICAL DATA**

CODE	DESCRIPTION	FLUIDS TYPE	FLOW-RATE		INLET / OUTLET BSP	WATER ABSORBING	EFFICIENCY β	MICRO μ m	PRESSURE BAR
			L/MIN	GPM					

**FILTER FOR BIOFUEL**

FO0611C00	BIO-FUEL FILTER 70 L/MIN 1"X1"	B G	70	18,5	1"	YES	200	10	3,5
FO0611C10	BIO-FUEL FILTER 100 L/MIN 1"X1"	B G	100	26,4	1"	YES	200	10	3,5
F14861000	CARTRIDGE 70 L/MIN BIO-FUEL	B G	70	19,5	-	YES	200	10	3,5
R14862000	CARTRIDGE 100 L/MIN BIO-FUEL	B G	100	26,4	-	YES	200	10	3,5
F14640000	FILTER HEAD UNF 70 L/MIN		-	-	1"	NO	-	-	-
F15743000	FILTER HEAD 100 L/MIN		-	-	1"	NO	-	-	-

**FILTER FOR FUEL AND OIL**

FO777200A	60 L/MIN FILTER WITH HEAD	B D G O	60	15,9	1"	NO	2	10	12
FO914900A	100 L/MIN FILTER WITH HEAD	B D G O	100	26,4	1"	NO	2	10	12
FO9149020	100 L/MIN FILTER WITH HEAD	B D G O	100	26,4	1"	NO	2	5	12
FO0611000	CARTRIDGE 60 L/MIN	B D G O	60	15,9	-	NO	2	10	12
FO9359000	CARTRIDGE 100 L/MIN	B D G O	100	26,4	-	NO	2	10	12
FO9359010	CARTRIDGE 100 L/MIN	B D G O	100	26,4	-	NO	2	5	12
F14528000	FILTER HEAD 3/4 BSP 60 L/MIN	B D G O	-	-	1"	NO	-	-	-
F15743000	FILTER HEAD 100 L/MIN	B D G O	-	-	1"	NO	-	-	-
F16483010	PIUSI BOX CARTRIDGE 60 L/MIN (15 PCS)		60	15,9	-	NO	2	10	12

**LINE FILTER**

FO8950000	LINE FILTER		-	-	1"	NO	-	-	-
-----------	-------------	--	---	---	----	----	---	---	---

**FUEL & BIOFUEL**